

# ROAD INDEX



A	I	RADCLIFFE RD. B1 F1 Rock Creek Rd. D3 G1
B	J	BASCOMBE RD. F2, F4 BRAKEMAN RD. D1, D4 BROWN RD. B2, B4
C	K	SAWMILL DR. C4 C5 SISSON RD. E6 G6 SUMNER RD. F1 F2 KILE RD. G2 G6
D	L	CHARDON WINDSOR RD. A6, D6 CLARIDON TROY RD. D6, E6 CUTTS RD. B4, B5 TAYLORWELLS RD. C6
E	M	
F	N	VENUS RD. E3, E4
G	O	WILLIAMS RD. E1, E3 WOODIN RD. A4, D4 WILDWOOD DR. B3 WILLOW LANE 'D1
	P	
	Q	
	X	
	Y	
	Z	

① HAMB DEN ELEMENTARY SCHOOL  
 ② HAMB DEN CONGREGATIONAL CH.  
 ③ CHRISTIAN & MISSIONARY ALLIANCE CH.  
 ④ HAMB DEN CEMETERY  
 ⑤ HAMB DEN VOL. FIRE DEPT.  
 ⑥ HAMB DEN TOWN HALL

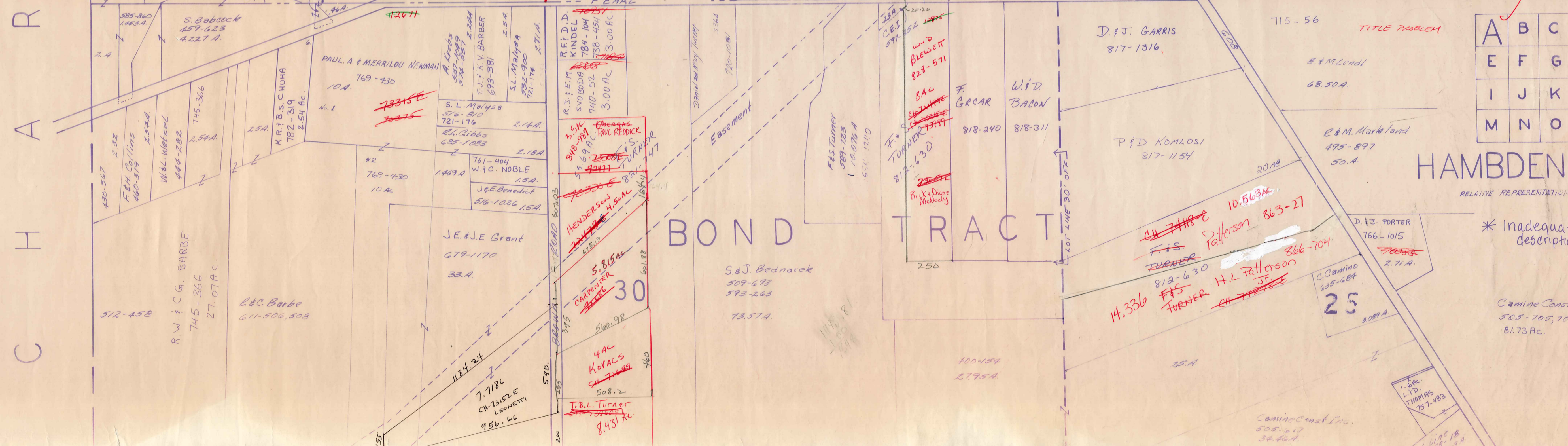
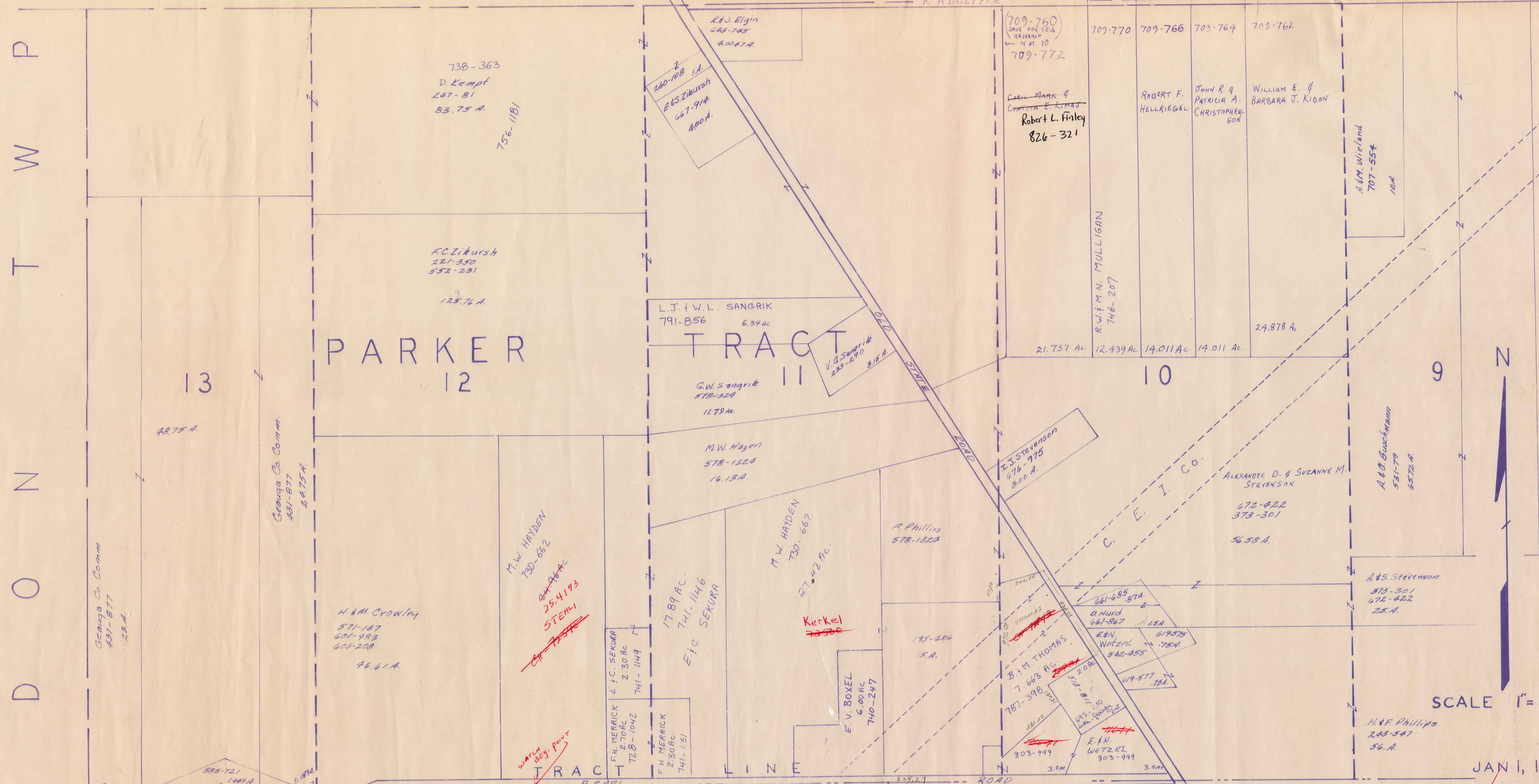
## HAMB DEN TOWNSHIP

SCALE = 1" = 2000'  
 ROBERT L. PHILLIPS  
 GEauga COUNTY ENGINEER

--- UNPAVED ROAD  
 = PAVED ROAD  
 - - - COUNTY LINE  
 --- RAILROAD  
 - - - TOWNSHIP LINE  
 - - - CORPORATION LINE

*Bright found for 4*  
 1-26-93

L A K E C O U N T Y



C H A R D O N T W P

PARKER TRACT

BOND TRACT

HAMDEN TWP

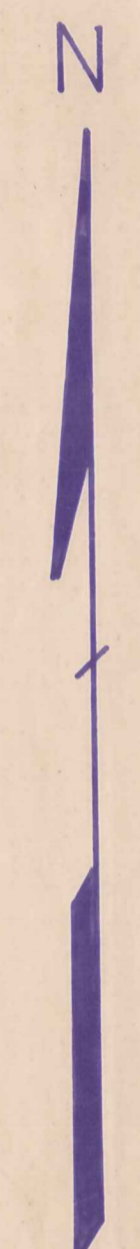
RELATIVE REPRESENTATION

\* Inadequate description

A	B	C	D
E	F	G	H
I	J	K	L
M	N	O	P

JAN 1, 1989

SCALE 1"=300



13

12

10

9

PEARL ROAD

RADCLIFFE ROAD

BOND TRACT

JE & JE Grant  
679-1170  
33.8 A.

30

S & J Bednarek  
509-678  
573-263  
73.57 A.

H. 336  
FURNER  
818-630  
H.L. Patterson  
806-704

25

Camino Const. Inc.  
505-217  
81.73 Ac.

738-363  
D. Kempt  
247-81  
83.75 A.

F.C. Zikursh  
221-350  
532-231  
129.76 A.

L.J. & W.L. SANGRIK  
791-856  
6.34 ac

G.W. Sangrik  
578-1324  
11.79 ac

M.W. Hagen  
578-1324  
16.13 A.

M.W. HAYDEN  
730-662  
87.42 ac.

A. Phillips  
578-1324

I.J. Stevenson  
676-975  
3.00 A.

ALEXANDER D. & SUZANNE M.  
STEVENSON  
676-422  
373-301  
56.58 A.

A.S. Stevenson  
373-301  
676-422  
25. A.

H.F. Phillips  
203-547  
56. A.

Georgia Co. Comm.  
431-877  
23. A.

Georgia Co. Comm.  
431-877  
24.75 A.

H.M. Crowley  
571-147  
601-993  
603-208  
44.61 A.

M.W. HAYDEN  
730-662  
87.42 ac  
STEHLI  
25,4193

F.H. MERRICK  
728-1042  
2.30 ac

F.H. MERRICK  
741-151  
2.30 ac

E.V. BOXEL  
740-247  
6.00 ac

B.M. THOMAS  
787-398  
7.023 ac

E.V. WETZEL  
203-999  
3.00 ac

D. & J. GARRIS  
817-1316

715-56  
E. & M. Lendl  
68.50 A.

TITLE PROBLEM

E. & M. Markland  
495-897  
50. A.

D. & J. PORTER  
766-1015  
2.71 A.

C. Camino  
425-684

1.6 ac  
L.P.D. THOMAS  
157-983

S. Babcock  
579-223  
4.227 A.

PAUL A. & MERRILOU NEWMAN  
769-430  
10. A.

S.L. Malaga  
576-810  
721-176  
2.14 A.

T.M. & V. BARBER  
693-381  
2.3 A.

S.L. Malaga  
576-810  
721-176  
2.14 A.

R.F. D.D. KINDEL  
784-104  
788-451  
740-52  
3.00 ac

R.S. ELM  
576-810  
721-176  
2.14 A.

S. & J. Bednarek  
509-678  
573-263  
73.57 A.

F. GEAR  
818-240

W.D. BACON  
818-311

P. & D. KOMLOSI  
817-1154

E. & M. Lendl  
68.50 A.

E. & M. Markland  
495-897  
50. A.

D. & J. PORTER  
766-1015  
2.71 A.

C. Camino  
425-684

1.6 ac  
L.P.D. THOMAS  
157-983

Camino Const. Inc.  
505-217  
81.73 Ac.

R.W. & C.G. BARDE  
745-366  
27.07 ac

L.C. Barbe  
611-504, 508

761-404  
W. & C. NOBLE  
1.5 A.

J. & E. Benedict  
576-1026, 104

761-404  
W. & C. NOBLE  
1.5 A.

761-404  
W. & C. NOBLE  
1.5 A.

761-404  
W. & C. NOBLE  
1.5 A.

761-404  
W. & C. NOBLE  
1.5 A.

761-404  
W. & C. NOBLE  
1.5 A.

761-404  
W. & C. NOBLE  
1.5 A.

761-404  
W. & C. NOBLE  
1.5 A.

761-404  
W. & C. NOBLE  
1.5 A.

761-404  
W. & C. NOBLE  
1.5 A.

761-404  
W. & C. NOBLE  
1.5 A.

761-404  
W. & C. NOBLE  
1.5 A.

761-404  
W. & C. NOBLE  
1.5 A.

761-404  
W. & C. NOBLE  
1.5 A.

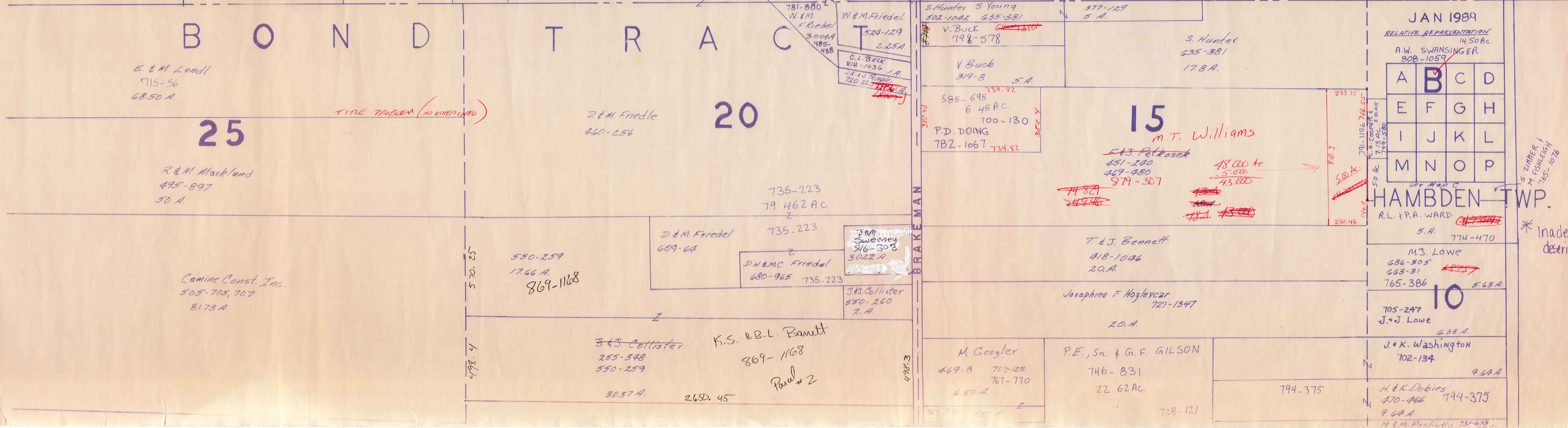
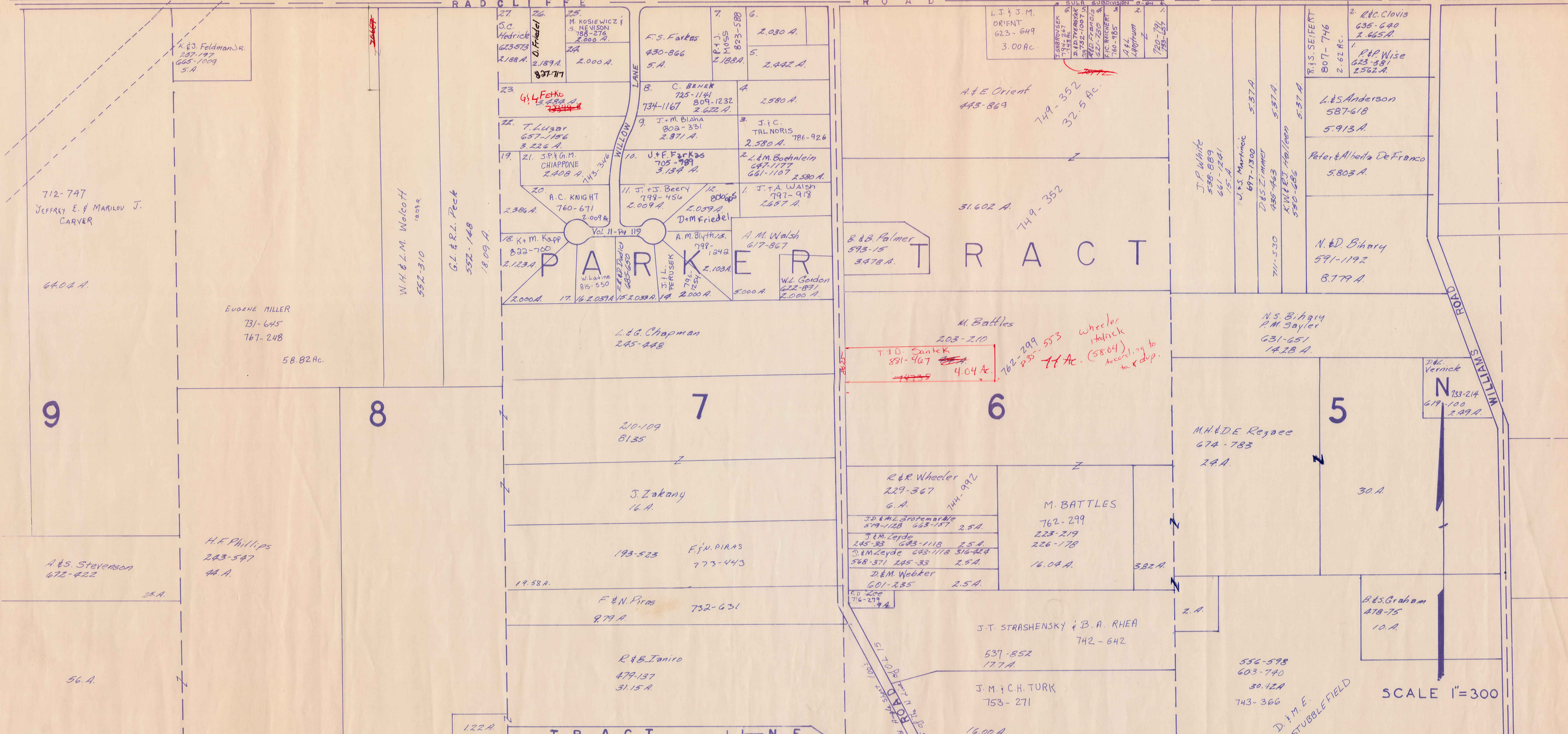
761-404  
W. & C. NOBLE  
1.5 A.

761-404  
W. & C. NOBLE  
1.5 A.

761-404  
W. & C. NOBLE  
1.5 A.

L A K E C O U N T Y

RADCLIFFE ROAD



712-747  
JEFFREY E. & MARILYN J.  
CARVER

EUGENE MILLER  
731-645  
767-248  
58.82 AC.

A & S. STEVENSON  
672-422

H.F. PHILLIPS  
203-547  
44 A.

56 A.

E & M. LEARD  
715-56  
68.50 A.

R & M. MARKLAND  
495-897  
50 A.

Camine Const. Inc.  
505-705, 707  
81.73 A.

W.H. & L.M. WALCOTT  
552-310  
1809 sq.

G.L. & R.L. PECK  
552-148  
1809 A.

27  
S.C. MEDRICK  
623-573  
2188 A.

25  
M. ROSIEWICZ &  
S. NEVISON  
185-276  
2,000 A.

23  
L. FETKO  
5482 A.

22  
T. LUGAR  
657-1156  
3,226 A.

21  
J.P. & G.M. CHIAPPONE  
2,408 A.

20  
A.C. KNIGHT  
760-671  
2,009 A.

18  
K.M. KAPP  
832-700  
2,123 A.

17  
L.G. CHAPMAN  
245-448

16  
S. ZAKANY  
16 A.

15  
F. & N. PIRAS  
732-631

14  
R. & B. IANIRO  
479-137  
31.15 A.

13  
D. & M. FRIEDEL  
460-256

12  
D. & M. FRIEDEL  
609-64

11  
D. & M. FRIEDEL  
680-965

10  
J. & S. COLLISTER  
255-348  
550-259

9  
K.S. & B.L. BENNETT  
869-1168  
Parcel # 2

8  
M. GEISLER  
469-8  
752-125  
767-770  
6.50 A.

7  
F.S. FARKAS  
430-866  
5 A.

6  
C. BENEK  
725-1141  
734-1167  
2,622 A.

5  
J.M. BLANA  
802-331  
2,871 A.

4  
J.F. FARKAS  
705-781  
3,134 A.

3  
J. & S. BEERY  
799-456  
2,009 A.

2  
A.M. WALSH  
617-867

1  
W.L. GORDON  
622-871  
2,000 A.

10  
J. & F. FARKAS  
705-781  
3,134 A.

9  
J.C. TALNORIS  
786-926  
2,580 A.

8  
& B. PALMER  
595-15  
3,478 A.

7  
M. BATTLES  
203-210

6  
R. & R. WHEELER  
229-367  
6 A.

5  
J. & M. STROFENBERG  
579-1168  
2.5 A.

4  
S.M. LEYDE  
245-33  
2.5 A.

3  
D. & M. WEBER  
601-235  
2.5 A.

2  
J. & M. STRASHENSKY & B.A. RHEA  
742-642

1  
L.J. & J.M. ORIENT  
623-649  
3.00 AC.

1  
A. & E. ORIENT  
443-869

1  
J.P. WHITE  
588-889  
661-2241  
65 A.

1  
J.S. MARTINIC  
677-1300  
5.57 A.

1  
D. & S. TAMMER  
435-463

1  
K. & R. J. HALLMAN  
550-686

1  
R. & S. SEIFERT  
807-746  
2.62 AC.

1  
R. & C. CLOVIS  
635-640  
2.665 A.

1  
P. & P. WISE  
623-381  
2.562 A.

1  
L. & S. ANDERSON  
587-618  
5.913 A.

1  
PETER & ALBERTA DEFRANCO  
5803 A.

1  
N. & D. BIRNEY  
591-1192  
8.779 A.

1  
N.S. BIRNEY  
R.M. SAYLER  
631-651  
14.28 A.

1  
M. & D. E. REZACE  
674-783  
2.4 A.

1  
R. & S. GRAHAM  
478-75  
10 A.

1  
J. & M. E. STUBBLEFIELD

1  
S. HUNTER  
5 YOUNG  
502-1042  
635-381

1  
V. BUCK  
198-578

1  
V. BUCK  
317-B  
5 A.

1  
P.D. DOING  
782-1067  
734.52

1  
S. HUNTER  
635-381  
17.8 A.

1  
M.T. WILLIAMS

1  
F. & S. PELTOSCH  
451-240  
469-480  
979-307

1  
T. & S. BENNETT  
418-1046  
20 A.

1  
JOSEPHINE F. HOZLEYCAR  
727-1347

1  
M. GEISLER  
469-8  
752-125  
767-770  
6.50 A.

1  
P.E., SN. & G.F. GILSON  
746-831  
22.62 AC.

1  
J. & K. WASHINGTON  
702-134  
9.64 A.

1  
A. & K. DOBIES  
470-466  
794-375  
9.64 A.

1  
M. & M. PASCHALL  
737-623

1  
J. & J. LOWE  
638 A.

1  
J. & J. LOWE  
705-247

1  
R. & S. SEIFERT  
807-746  
2.62 AC.

1  
R. & C. CLOVIS  
635-640  
2.665 A.

1  
P. & P. WISE  
623-381  
2.562 A.

1  
L. & S. ANDERSON  
587-618  
5.913 A.

1  
PETER & ALBERTA DEFRANCO  
5803 A.

1  
N. & D. BIRNEY  
591-1192  
8.779 A.

1  
N.S. BIRNEY  
R.M. SAYLER  
631-651  
14.28 A.

1  
M. & D. E. REZACE  
674-783  
2.4 A.

1  
R. & S. GRAHAM  
478-75  
10 A.

1  
J. & M. E. STUBBLEFIELD

1  
S. HUNTER  
5 YOUNG  
502-1042  
635-381

1  
V. BUCK  
198-578

1  
V. BUCK  
317-B  
5 A.

1  
P.D. DOING  
782-1067  
734.52

1  
S. HUNTER  
635-381  
17.8 A.

1  
M.T. WILLIAMS

1  
R. & S. SEIFERT  
807-746  
2.62 AC.

1  
R. & C. CLOVIS  
635-640  
2.665 A.

1  
P. & P. WISE  
623-381  
2.562 A.

1  
L. & S. ANDERSON  
587-618  
5.913 A.

1  
PETER & ALBERTA DEFRANCO  
5803 A.

1  
N. & D. BIRNEY  
591-1192  
8.779 A.

1  
N.S. BIRNEY  
R.M. SAYLER  
631-651  
14.28 A.

1  
M. & D. E. REZACE  
674-783  
2.4 A.

1  
R. & S. GRAHAM  
478-75  
10 A.

1  
J. & M. E. STUBBLEFIELD

1  
S. HUNTER  
5 YOUNG  
502-1042  
635-381

1  
V. BUCK  
198-578

1  
V. BUCK  
317-B  
5 A.

1  
P.D. DOING  
782-1067  
734.52

1  
S. HUNTER  
635-381  
17.8 A.

1  
M.T. WILLIAMS

1  
R. & S. SEIFERT  
807-746  
2.62 AC.

1  
R. & C. CLOVIS  
635-640  
2.665 A.

1  
P. & P. WISE  
623-381  
2.562 A.

1  
L. & S. ANDERSON  
587-618  
5.913 A.

1  
PETER & ALBERTA DEFRANCO  
5803 A.

1  
N. & D. BIRNEY  
591-1192  
8.779 A.

1  
N.S. BIRNEY  
R.M. SAYLER  
631-651  
14.28 A.

1  
M. & D. E. REZACE  
674-783  
2.4 A.

1  
R. & S. GRAHAM  
478-75  
10 A.

1  
J. & M. E. STUBBLEFIELD

1  
S. HUNTER  
5 YOUNG  
502-1042  
635-381

1  
V. BUCK  
198-578

1  
V. BUCK  
317-B  
5 A.

1  
P.D. DOING  
782-1067  
734.52

1  
S. HUNTER  
635-381  
17.8 A.

1  
M.T. WILLIAMS

JAN 1989  
RELATIVE REPRESENTATION  
14.50 AC.  
A.W. SWANSINGER  
808-1059

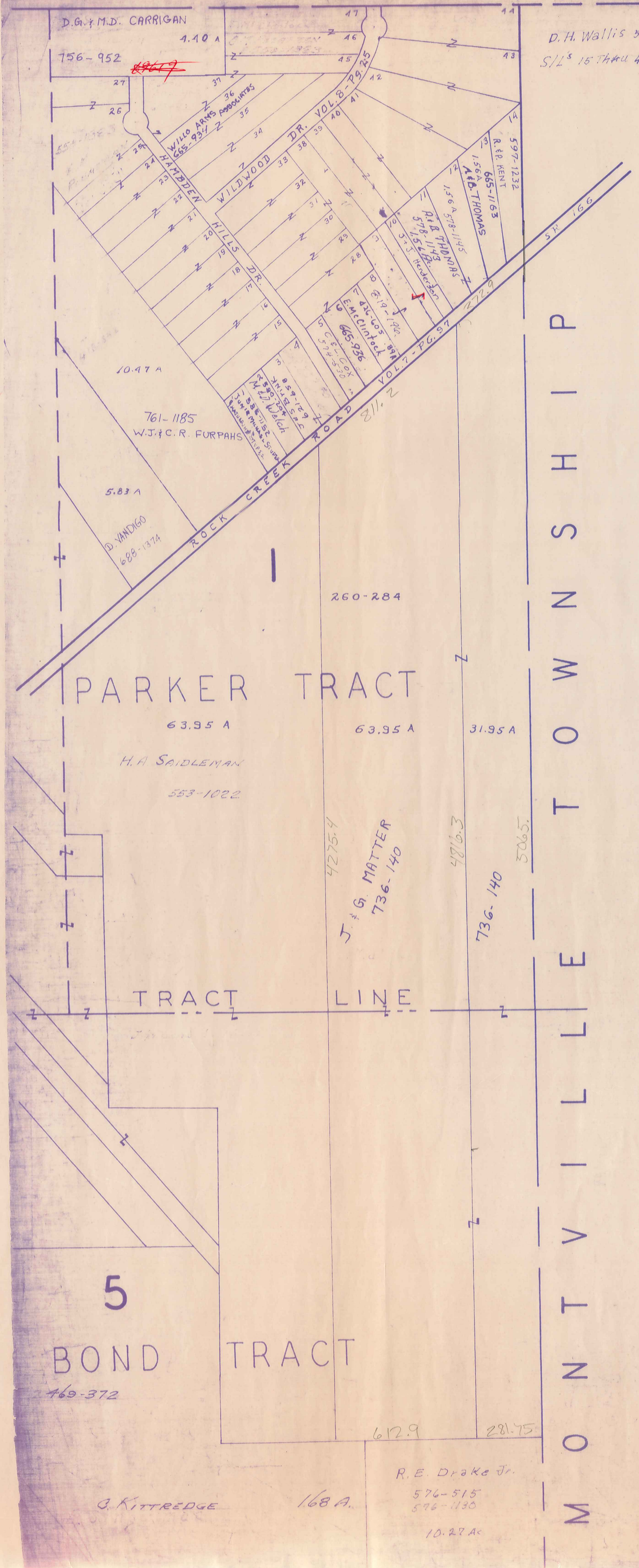
A	B	C	D
E	F	G	H
I	J	K	L
M	N	O	P

See Map C  
HAMB DEN TWP.  
R.L. P.A. WARD  
5 A. 774-470

\* Inadequate description

SCALE 1"=300





M O N T V I L L E T O W N S H I P



SCALE 1" = 300'  
 JAN. 1, 1989

A	B	C	<b>D</b>
E	F	G	H
I	J	K	L
M	N	O	P

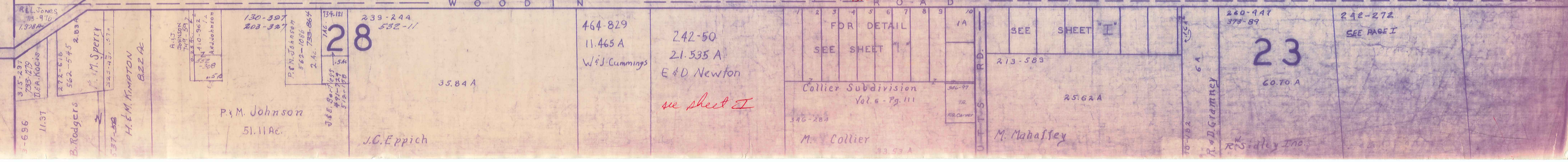
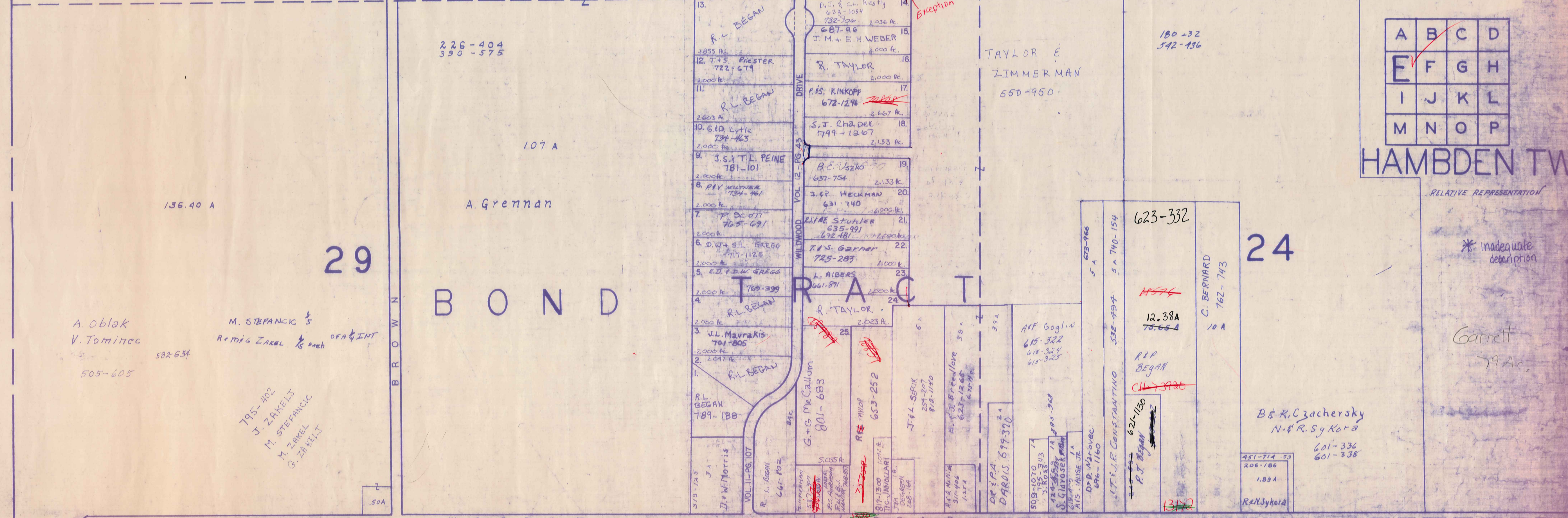
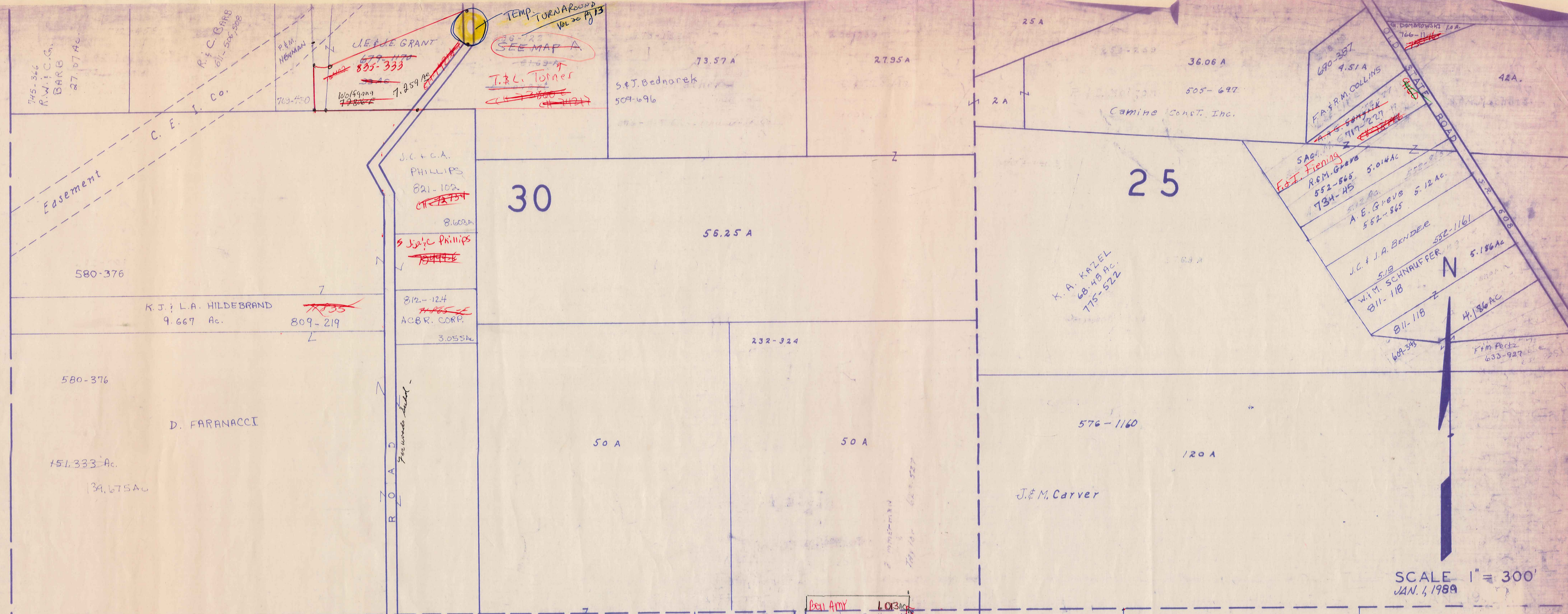
HAMBDEN TWP.

RELATIVE REPRESENTATION

\* Inadequate description

5/1/89

C H A R D O N T O W N S H I P



SCALE 1" = 300'  
JAN. 1, 1989

A	B	C	D
E	F	G	H
I	J	K	L
M	N	O	P

HAMBDEN TW

RELATIVE REPRESENTATION

\* Inadequate description

Garrett  
79 Ac.

23

240-447  
379-89

242-272  
SEE PAGE I

60.70 A

M. Mahaffey

213-583

25.62 A

SEE SHEET I

FOR DETAIL  
SEE SHEET II

Collier Subdivision  
Vol. 6 Pg. 111

M. Collier

346-289

33.92 A

464-829  
11.465 A  
W.J. Cummings

242-50  
21.535 A  
E.D. Newton  
see sheet II

35.84 A

J.C. Eppich

51.11 A  
P.M. Johnson

582-654  
A. Oblak  
V. Tominec

505-605

136.40 A

A. Grennan

107 A

226-404  
390-575

12.38 A  
75-654  
B. & R. Czachersky  
N. & R. Sykora

601-336  
601-338

10 A  
C. BERNARD  
762-743

623-332

12.38 A  
75-654

65-966  
5 A

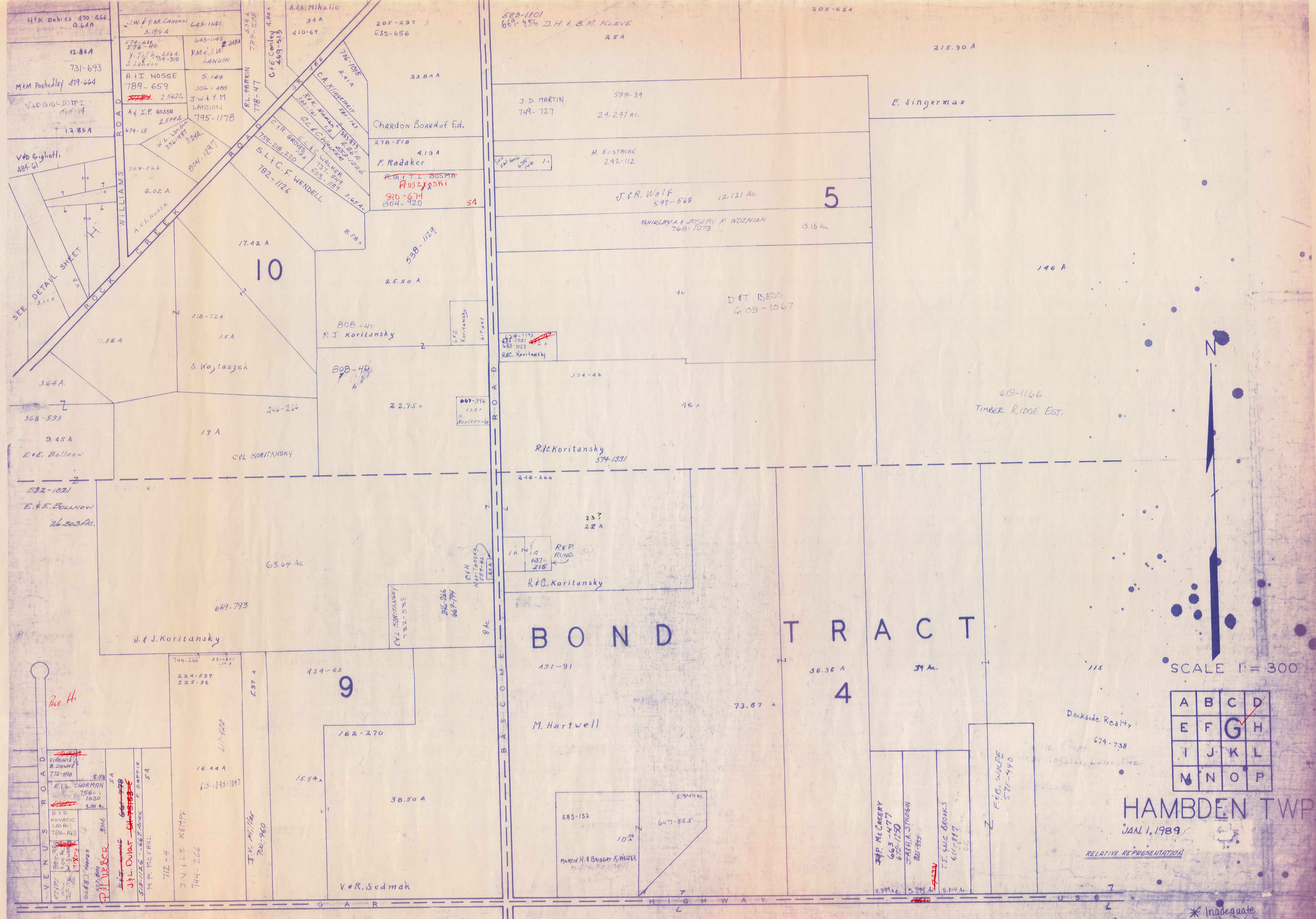
5 A 740-154

502-494

62-1130  
P.J. Began

615-322  
615-323  
615-324  
615-325  
615-326  
615-327  
615-328  
615-329  
615-330  
615-331  
615-332  
615-333  
615-334  
615-335  
615-336  
615-337  
615-338  
615-339  
615-340  
615-341  
615-342  
615-343  
615-344  
615-345  
615-346  
615-347  
615-348  
615-349  
615-350  
615-351  
615-352  
615-353  
615-354  
615-355  
615-356  
615-357  
615-358  
615-359  
615-360  
615-361  
615-362  
615-363  
615-364  
615-365  
615-366  
615-367  
615-368  
615-369  
615-370  
615-371  
615-372  
615-373  
615-374  
615-375  
615-376  
615-377  
615-378  
615-379  
615-380  
615-381  
615-382  
615-383  
615-384  
615-385  
615-386  
615-387  
615-388  
615-389  
615-390  
615-391  
615-392  
615-393  
615-394  
615-395  
615-396  
615-397  
615-398  
615-399  
615-400





H.K. Dobies 470-466  
9.64A  
12-86A  
731-643  
M&M Poshelley 819-664  
V&D Gigliotti 865-94  
12-85A

V&D Gigliotti  
48A-61  
12-85A

SEE DETAIL SHEET  
3.15A  
ROCK CREEK  
WILLIAMS ROAD

3.64A  
368-599  
9.45A  
E. & E. Bollnow

532-1021  
E. & E. Bollnow  
26.303 Ac.

63.64 Ac  
669-793  
J. J. Koritansky

744-206 431-891  
224-597 225-36  
439-63  
162-270  
15.54A  
38.50A  
V. R. Sedmak

744-206  
431-891  
224-597  
225-36  
439-63  
162-270  
15.54A  
38.50A  
V. R. Sedmak

J.W. & Y.M. Landon 643-1141  
3.189A  
574-638  
376-440  
Y. T. H. 258A  
J. Landon 134-310  
A. I. NOSSE  
789-659  
5.149  
356-485  
J.W. & Y.M. Landon  
795-1178  
A. I. P. NOSSE  
2.544A  
674-15  
W.L. Landon  
356-487  
2.91A  
804-1247

6.02A  
A. I. NOSSE  
889-522  
11.36A  
364A  
368-599  
9.45A  
E. & E. Bollnow

17.42A  
10  
118-724  
15A  
S. Wojtaszek  
17A  
C.F.L. KORITANSKY

246-266  
2.275A  
R.J. Koritansky  
808-40  
R.J. Koritansky

63.64 Ac  
669-793  
J. J. Koritansky

744-206 431-891  
224-597 225-36  
439-63  
162-270  
15.54A  
38.50A  
V. R. Sedmak

744-206  
431-891  
224-597  
225-36  
439-63  
162-270  
15.54A  
38.50A  
V. R. Sedmak

744-206  
431-891  
224-597  
225-36  
439-63  
162-270  
15.54A  
38.50A  
V. R. Sedmak

A.A. Michalic  
39A  
410-67  
205-297  
635-656  
23.84A  
Chardon Board of Ed.  
278-518  
4.13A  
F. Radaker  
R.G.T.L. BOSMA  
PROSZKASKI  
890-674  
804-920  
5A

278-518  
4.13A  
F. Radaker  
R.G.T.L. BOSMA  
PROSZKASKI  
890-674  
804-920  
5A

808-40  
R.J. Koritansky  
808-40  
R.J. Koritansky

2.275A  
R.J. Koritansky  
808-40  
R.J. Koritansky

63.64 Ac  
669-793  
J. J. Koritansky

744-206 431-891  
224-597 225-36  
439-63  
162-270  
15.54A  
38.50A  
V. R. Sedmak

744-206  
431-891  
224-597  
225-36  
439-63  
162-270  
15.54A  
38.50A  
V. R. Sedmak

744-206  
431-891  
224-597  
225-36  
439-63  
162-270  
15.54A  
38.50A  
V. R. Sedmak

523-1101  
669-456 J.H. & B.M. KLEVE  
25A  
J.D. MARTIN  
749-727  
24.241 ac.  
H. EUSTACHE  
242-112  
J. & R. Wolf  
597-568  
12.121 Ac.  
SHIRLEY & JOSEPH F. WOZNIAK  
768-1073  
15.15 Ac.  
D. & T. BESS  
609-1067  
146A  
619-1166  
TIMBER RIDGE EST.

599-34  
24.241 ac.  
242-112  
12.121 Ac.  
15.15 Ac.

374-42  
46A  
R.J. Koritansky  
574-1831

246-266  
237  
22A  
R.J. Koritansky

63.64 Ac  
669-793  
J. J. Koritansky

744-206 431-891  
224-597 225-36  
439-63  
162-270  
15.54A  
38.50A  
V. R. Sedmak

744-206  
431-891  
224-597  
225-36  
439-63  
162-270  
15.54A  
38.50A  
V. R. Sedmak

744-206  
431-891  
224-597  
225-36  
439-63  
162-270  
15.54A  
38.50A  
V. R. Sedmak

599-34  
24.241 ac.  
242-112  
12.121 Ac.  
15.15 Ac.

374-42  
46A  
R.J. Koritansky  
574-1831

246-266  
237  
22A  
R.J. Koritansky

63.64 Ac  
669-793  
J. J. Koritansky

744-206 431-891  
224-597 225-36  
439-63  
162-270  
15.54A  
38.50A  
V. R. Sedmak

744-206  
431-891  
224-597  
225-36  
439-63  
162-270  
15.54A  
38.50A  
V. R. Sedmak

744-206  
431-891  
224-597  
225-36  
439-63  
162-270  
15.54A  
38.50A  
V. R. Sedmak

744-206  
431-891  
224-597  
225-36  
439-63  
162-270  
15.54A  
38.50A  
V. R. Sedmak

599-34  
24.241 ac.  
242-112  
12.121 Ac.  
15.15 Ac.

374-42  
46A  
R.J. Koritansky  
574-1831

246-266  
237  
22A  
R.J. Koritansky

63.64 Ac  
669-793  
J. J. Koritansky

744-206 431-891  
224-597 225-36  
439-63  
162-270  
15.54A  
38.50A  
V. R. Sedmak

744-206  
431-891  
224-597  
225-36  
439-63  
162-270  
15.54A  
38.50A  
V. R. Sedmak

744-206  
431-891  
224-597  
225-36  
439-63  
162-270  
15.54A  
38.50A  
V. R. Sedmak

744-206  
431-891  
224-597  
225-36  
439-63  
162-270  
15.54A  
38.50A  
V. R. Sedmak

599-34  
24.241 ac.  
242-112  
12.121 Ac.  
15.15 Ac.

374-42  
46A  
R.J. Koritansky  
574-1831

246-266  
237  
22A  
R.J. Koritansky

63.64 Ac  
669-793  
J. J. Koritansky

744-206 431-891  
224-597 225-36  
439-63  
162-270  
15.54A  
38.50A  
V. R. Sedmak

744-206  
431-891  
224-597  
225-36  
439-63  
162-270  
15.54A  
38.50A  
V. R. Sedmak

744-206  
431-891  
224-597  
225-36  
439-63  
162-270  
15.54A  
38.50A  
V. R. Sedmak

744-206  
431-891  
224-597  
225-36  
439-63  
162-270  
15.54A  
38.50A  
V. R. Sedmak

599-34  
24.241 ac.  
242-112  
12.121 Ac.  
15.15 Ac.

374-42  
46A  
R.J. Koritansky  
574-1831

246-266  
237  
22A  
R.J. Koritansky

63.64 Ac  
669-793  
J. J. Koritansky

744-206 431-891  
224-597 225-36  
439-63  
162-270  
15.54A  
38.50A  
V. R. Sedmak

744-206  
431-891  
224-597  
225-36  
439-63  
162-270  
15.54A  
38.50A  
V. R. Sedmak

744-206  
431-891  
224-597  
225-36  
439-63  
162-270  
15.54A  
38.50A  
V. R. Sedmak

744-206  
431-891  
224-597  
225-36  
439-63  
162-270  
15.54A  
38.50A  
V. R. Sedmak

599-34  
24.241 ac.  
242-112  
12.121 Ac.  
15.15 Ac.

374-42  
46A  
R.J. Koritansky  
574-1831

246-266  
237  
22A  
R.J. Koritansky

63.64 Ac  
669-793  
J. J. Koritansky

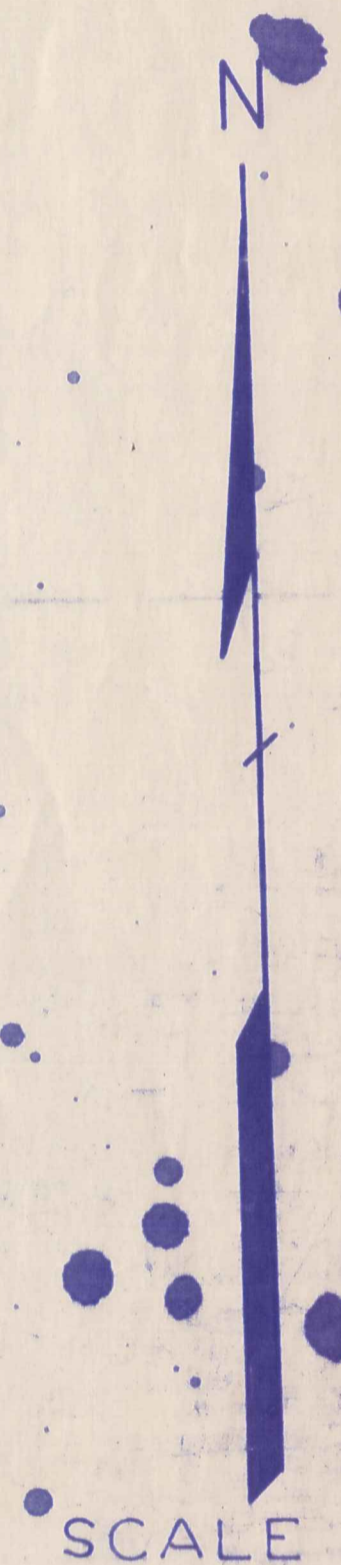
744-206 431-891  
224-597 225-36  
439-63  
162-270  
15.54A  
38.50A  
V. R. Sedmak

744-206  
431-891  
224-597  
225-36  
439-63  
162-270  
15.54A  
38.50A  
V. R. Sedmak

744-206  
431-891  
224-597  
225-36  
439-63  
162-270  
15.54A  
38.50A  
V. R. Sedmak

744-206  
431-891  
224-597  
225-36  
439-63  
162-270  
15.54A  
38.50A  
V. R. Sedmak

SEE PAGE "K"



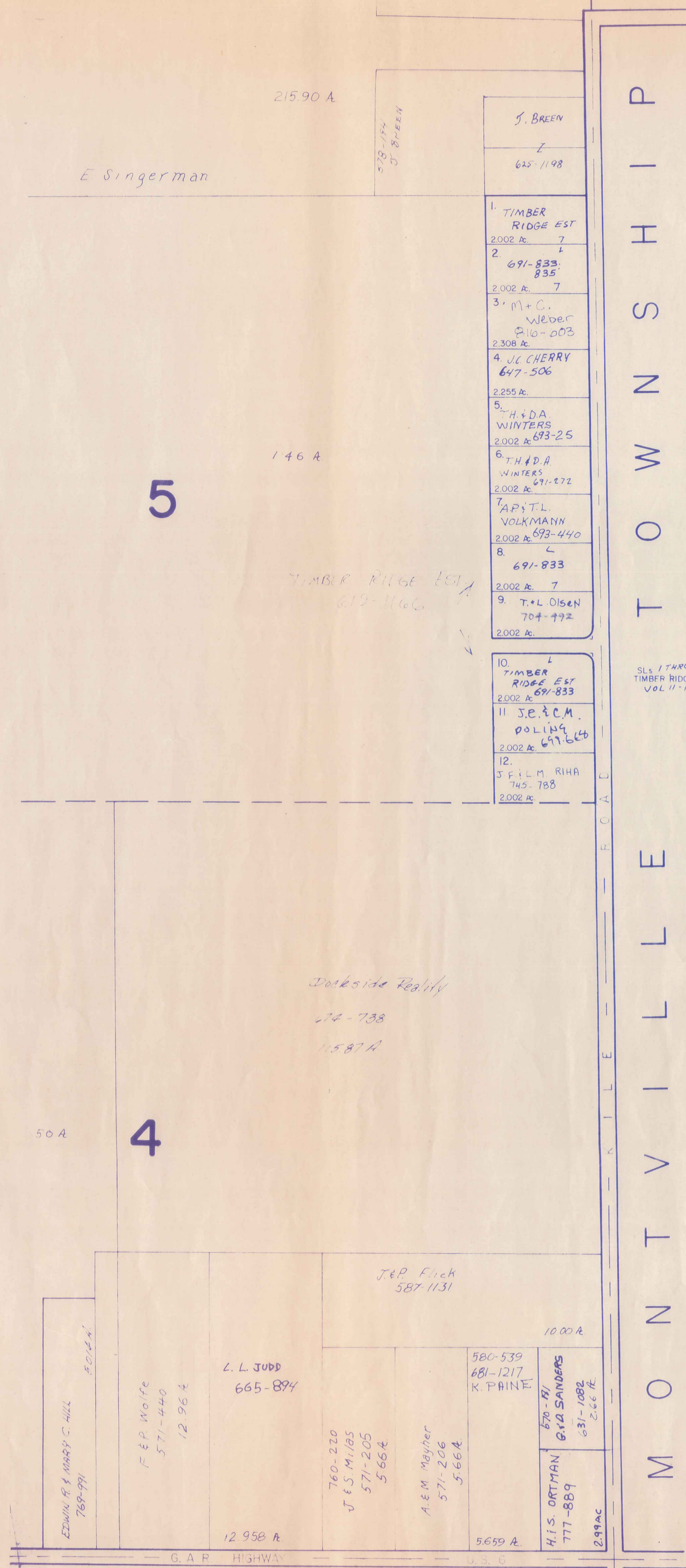
A	B	C	D
E	F	G	H
I	J	K	L
M	N	O	P

HAMB DEN TWP

JAN. 1, 1989

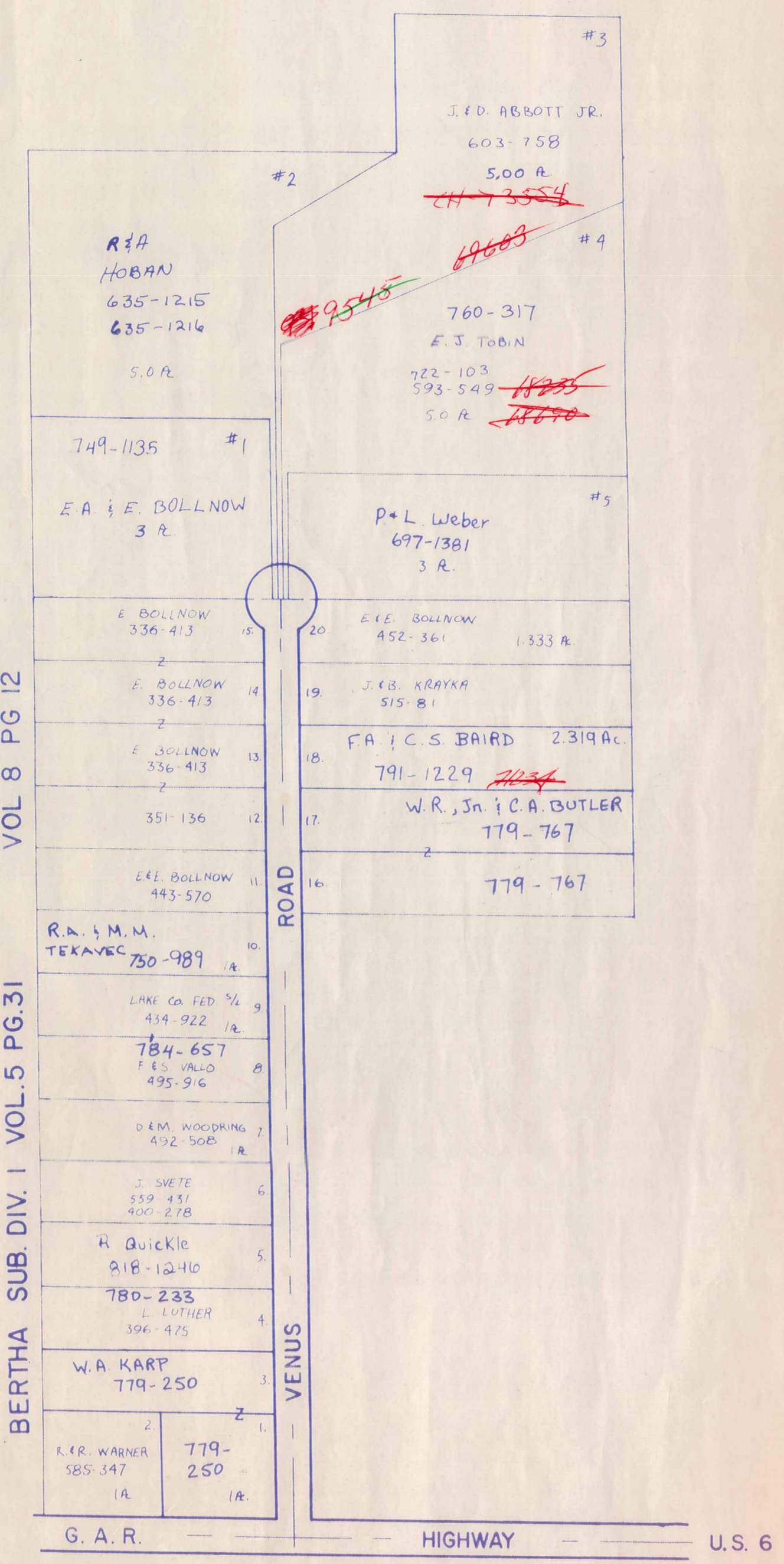
RELATIVE REPRESENTATION

\* Inadequate description

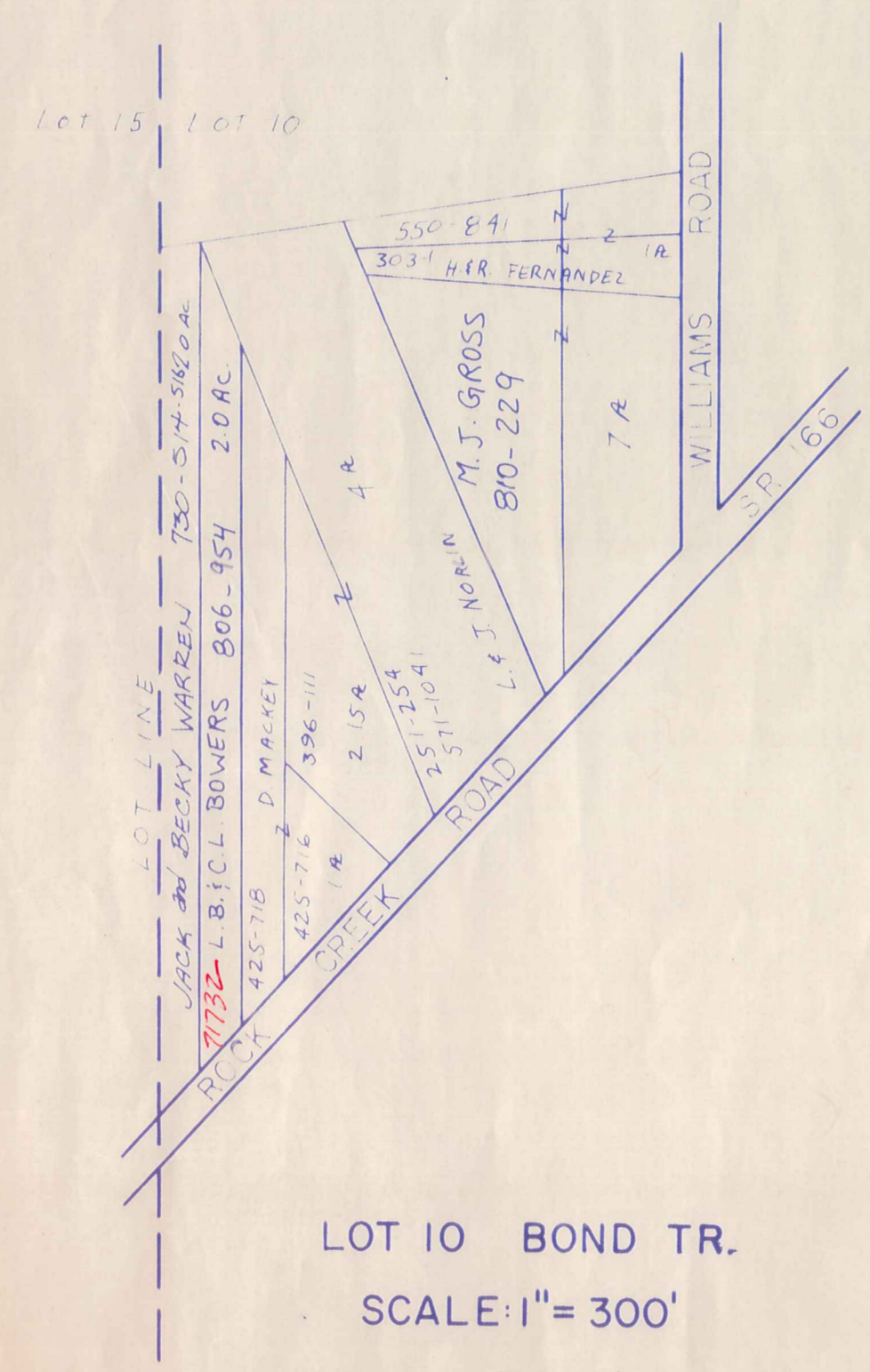


M O N T V I L L E T O W N S H I P

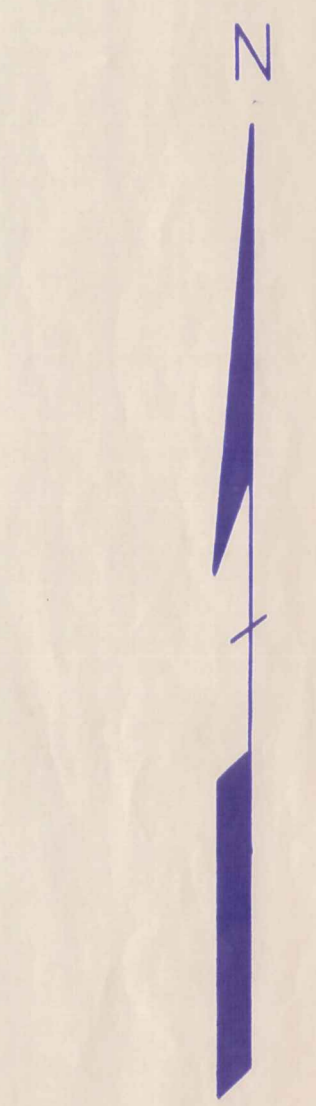
SUB. DIV. NO. 2 VOL 8 PG 12  
BERTHA SUB. DIV. I VOL. 5 PG. 31



LOT 9 & 14 BOND TR.  
SCALE: 1" = 200'



LOT 10 BOND TR.  
SCALE: 1" = 300'



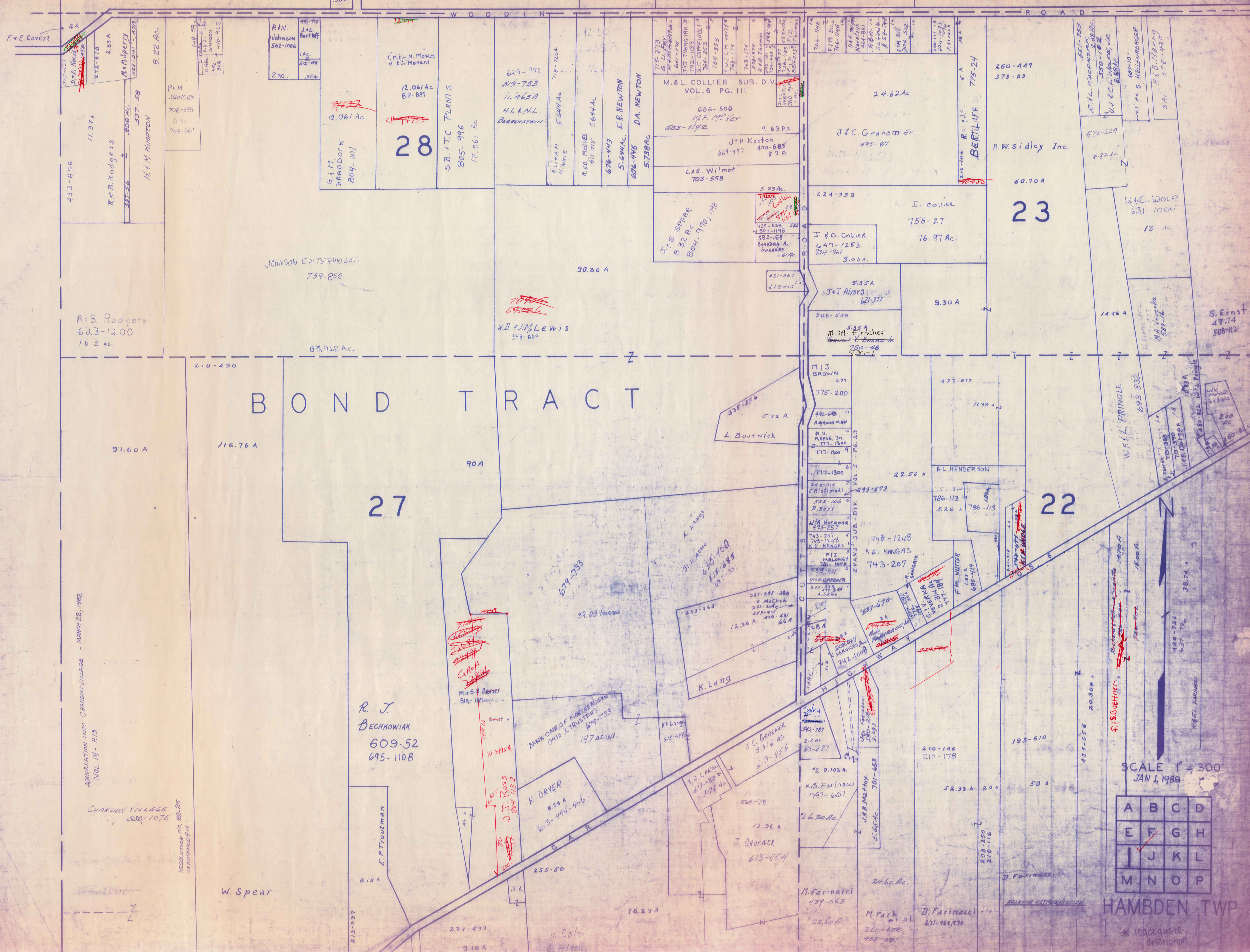
SCALE 1" = 300'  
JAN. 1, 1989

A	B	C	D
E	F	G	H
I	J	K	L
M	N	O	P

**HAMB DEN TWP.**

RELATIVE REPRESENTATION

\* Inadequate description



BOND TRACT

27

23

28

22

ANNEXATION INTO CHARDON VILLAGE - MARCH 22, 1982  
VOL. 14 - P. 15

CHARDON VILLAGE  
338-1075

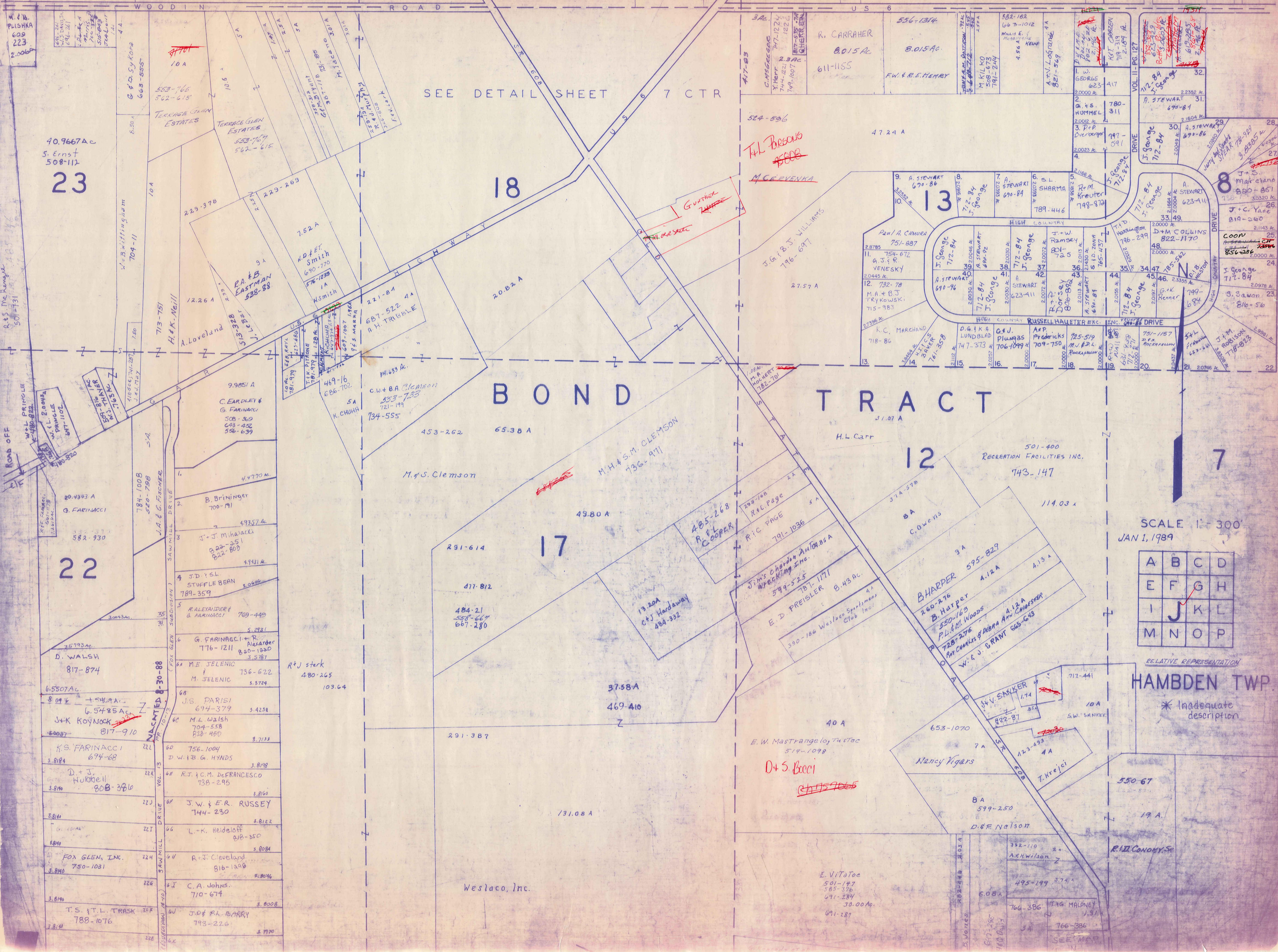
RESOLUTION NO. 82-25  
ORDINANCE 813

SCALE 1" = 300  
JAN 4, 1989

A	B	C	D
E	F	G	H
I	J	K	L
M	N	O	P

HAMB DEN TWP

\* inadequate description



M. & B. Plishka  
609  
223  
2.0000

40.9667 Ac  
S. Ernst  
508-112  
**23**

**22**

R&S McRemy  
501-731

W.L. PRINGLE  
480-922

W.L. PRINGLE  
480-922

W.L. PRINGLE  
480-922

W.L. PRINGLE  
480-922

W.L. PRINGLE  
480-922

W.L. PRINGLE  
480-922

SEE DETAIL SHEET 6 7 CTR

**18**

**BOND TRACT**

**17**

**13**

**12**

**8**

**7**

SCALE 1" = 300'  
JAN 1, 1989

A	B	C	D
E	F	G	H
I	J	K	L
M	N	O	P

RELATIVE REPRESENTATION  
**HAMBDEN TWP.**  
\* Inadequate description

10 A

10.6 A

7.52 A

2.26 A

7.52 A

2.21-84

20.82 A

27.57 A

2.0000 A

2.0000 A

2.0000 A

2.0000 A

2.0000 A

2.0000 A

2.0000 A

2.0000 A

2.0000 A

80.4343 A

4.4770 A

4.9357 A

4.931 A

4.931 A

4.931 A

4.931 A

4.931 A

4.931 A

4.931 A

4.931 A

4.931 A

4.931 A

4.931 A

4.931 A

4.931 A

4.931 A

3.5793 Ac

3.5793 Ac

3.5793 Ac

3.5793 Ac

3.5793 Ac

3.5793 Ac

3.5793 Ac

3.5793 Ac

3.5793 Ac

3.5793 Ac

3.5793 Ac

3.5793 Ac

3.5793 Ac

3.5793 Ac

3.5793 Ac

3.5793 Ac

3.5793 Ac

6.5507 Ac

6.5507 Ac

6.5507 Ac

6.5507 Ac

6.5507 Ac

6.5507 Ac

6.5507 Ac

6.5507 Ac

6.5507 Ac

6.5507 Ac

6.5507 Ac

6.5507 Ac

6.5507 Ac

6.5507 Ac

6.5507 Ac

6.5507 Ac

6.5507 Ac

3.8184

3.8184

3.8184

3.8184

3.8184

3.8184

3.8184

3.8184

3.8184

3.8184

3.8184

3.8184

3.8184

3.8184

3.8184

3.8184

3.8184

3.8184

3.8184

3.8184

3.8184

3.8184

3.8184

3.8184

3.8184

3.8184

3.8184

3.8184

3.8184

3.8184

3.8184

3.8184

3.8184

3.8184

3.8184

3.8184

3.8184

3.8184

3.8184

3.8184

3.8184

3.8184

3.8184

3.8184

3.8184

3.8184

3.8184

3.8184

3.8184

3.8184

3.8184

3.8184

3.8184

3.8184

3.8184

3.8184

3.8184

3.8184

3.8184

3.8184

3.8184

3.8184

3.8184

3.8184

3.8184

3.8184

3.8184

3.8184

3.8184

3.8184

3.8184

3.8184

3.8184

3.8184

3.8184

3.8184

3.8184

3.8184

3.8184

3.8184

3.8184

3.8184

3.8184

3.8184

3.8184

3.8184

3.8184

3.8184

3.8184

3.8184

3.8184

3.8184

3.8184

3.8184

3.8184

3.8184

3.8184

3.8184

3.8184

3.8184

3.8184

3.8184



G A R HIGHWAY US 6

3

170.00 A.

Dockside Realty  
674-238

BOND TRACT

R O A D  
T O W N S H I P  
L L E  
V I L L E  
M O N T

2

* 647-435 229-504 249Ac. 5A
<del>D.M. &amp; M. Coxson</del> Micco
430-952 4.98 A.
R. & B. Grant
R. & D. Susteric
657-261 4.98 A.
R. E. Crombie II
657-263 4.98 A.
G. M. Neal & M. R. Harwell
755-1127 4.98 A.
259-219
R. Kovaras
281-345 4.98 Ac.
M. & H. Tomosin
270-459 4.98 Ac.
D. S. SAE/19A
259-551 4.98 Ac.
424-826 580-177
A. M. Burnett 4.98 Ac.
MAX S. & ALICE L. HOCAB
726-586 4.98 Ac.
486-507 CLYDE C. & CONNIE TEWAL
PARCEL #2 5.187 Ac. Ballash
704-895
712-799

212-190  
255-94  
817-625  
817-627  
50 A  
S. Snopel

486-507 CH  
PARCEL #1  
3.027 Ac.  
572 Umana  
477-723  
486-507  
730-540  
C. C. Ballash 3.027 Ac.  
210-528  
K. M. SCHELTZOW  
4 Ac.  
615.12'

G. & R. RAY  
601 1051  
883-287 50 A  
W. & M. Montague  
48467 Ac.  
see P.K.  
Cloran 870-201  
#817



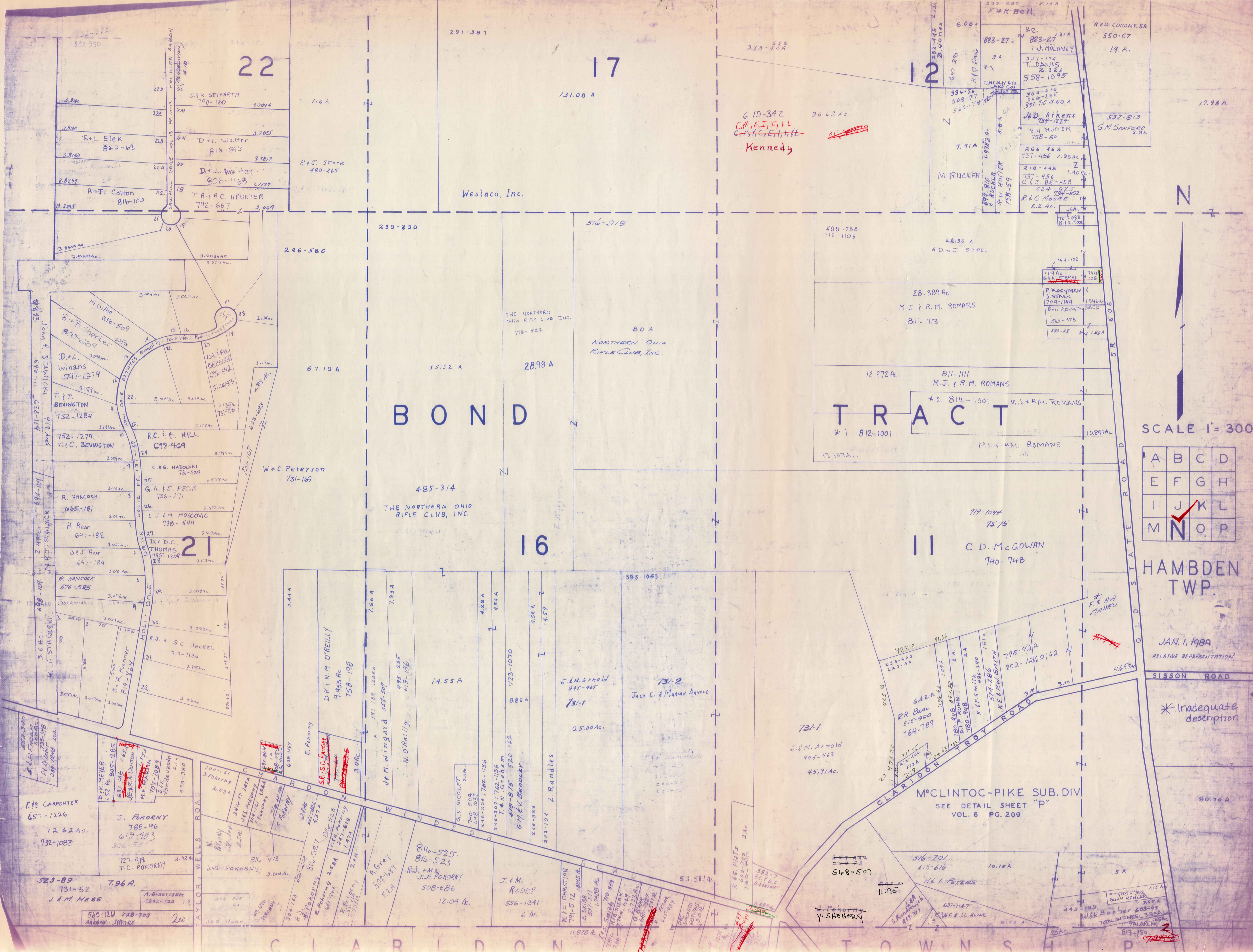
SCALE 1" = 300'  
RELATIVE REPRESENTATION

A	B	C	D
E	F	G	H
I	J	K	L
M	N	O	P

HAMB DEN TWP.  
JAN 1 1989

\* Inadequate description





6.19-342  
 C.M.E.I.T.I.L  
 G.M.H.G.E.I.H.H.L  
 Kennedy

# BOND

# TRACT

SCALE 1" = 300'

A	B	C	D
E	F	G	H
I	J	K	L
M	N	O	P

HAMB DEN TWP.

JAN. 1, 1939  
 RELATIVE REPRESENTATION

\* Inadequate description

M'CLINTOC-PIKE SUB. DIV.  
 SEE DETAIL SHEET "P"  
 VOL. 6 PG. 209

22

17

12

16

11

N

CLARIDON TOWNSHIP

356-65-67

94 A

427-993

147.40 A

260-271

S. Sempel et al.

State of Ohio

17.38 A

7

2

± 100 A

764-769

P.A. SPISAK

260-274

P.A. SPISAK

764-769

31.80 A

P. Spisak

266-581

BOND

TRACT

562.34 A

6

State of Ohio

SCALE 1" = 300'

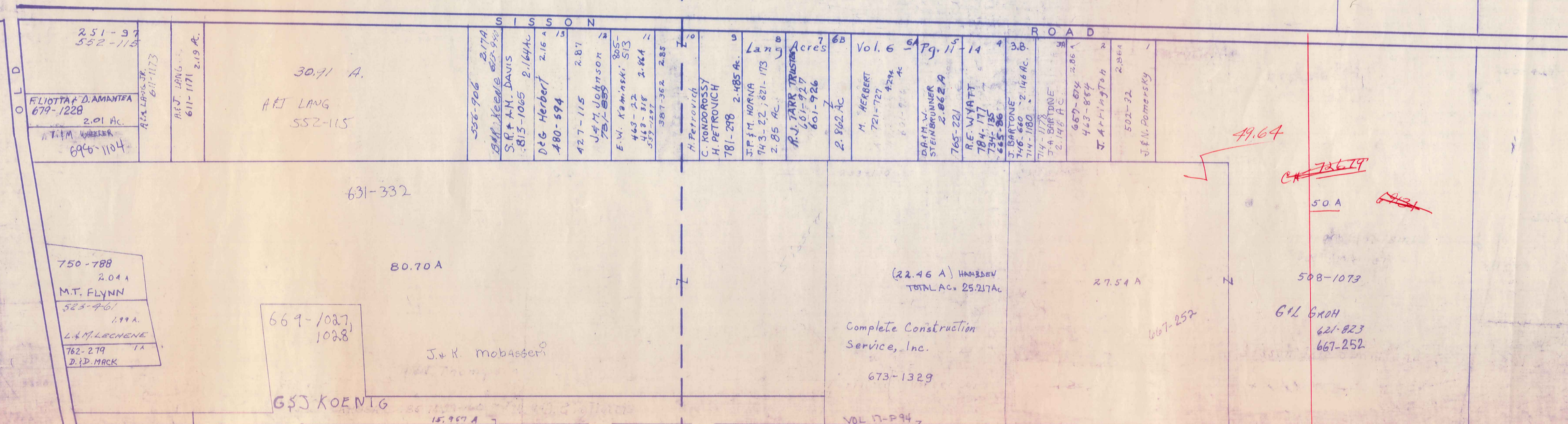
A	B	C	D
E	F	G	H
I	J	K	L
M	N	O	P

HAMB DEN TWP.

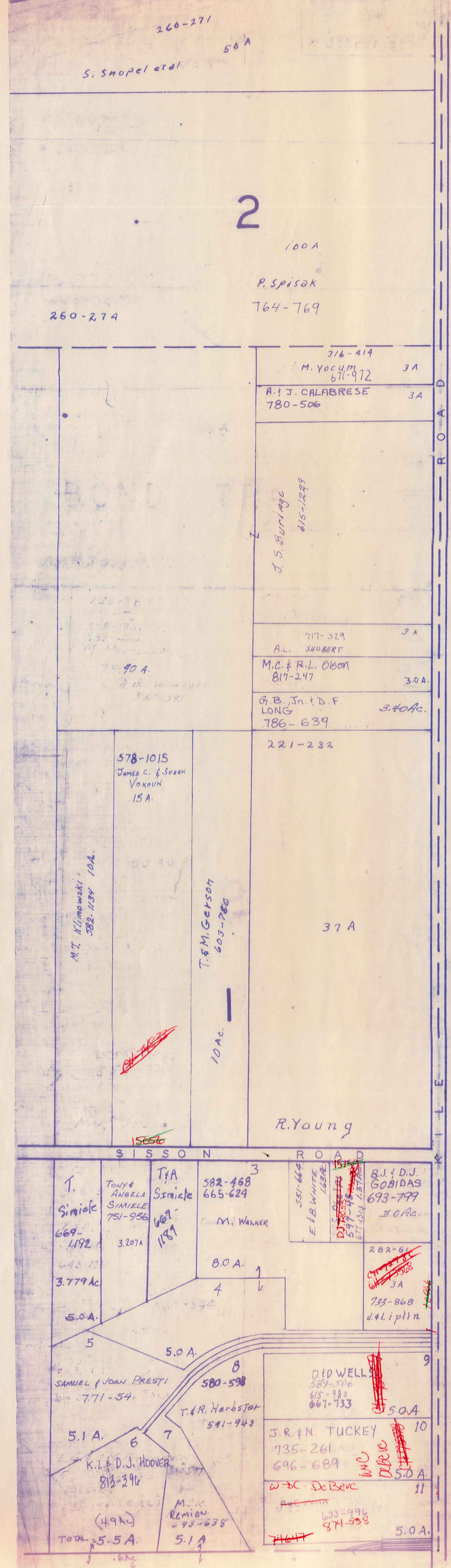
JAN. 1, 1989

RELATIVE REPRESENTATION

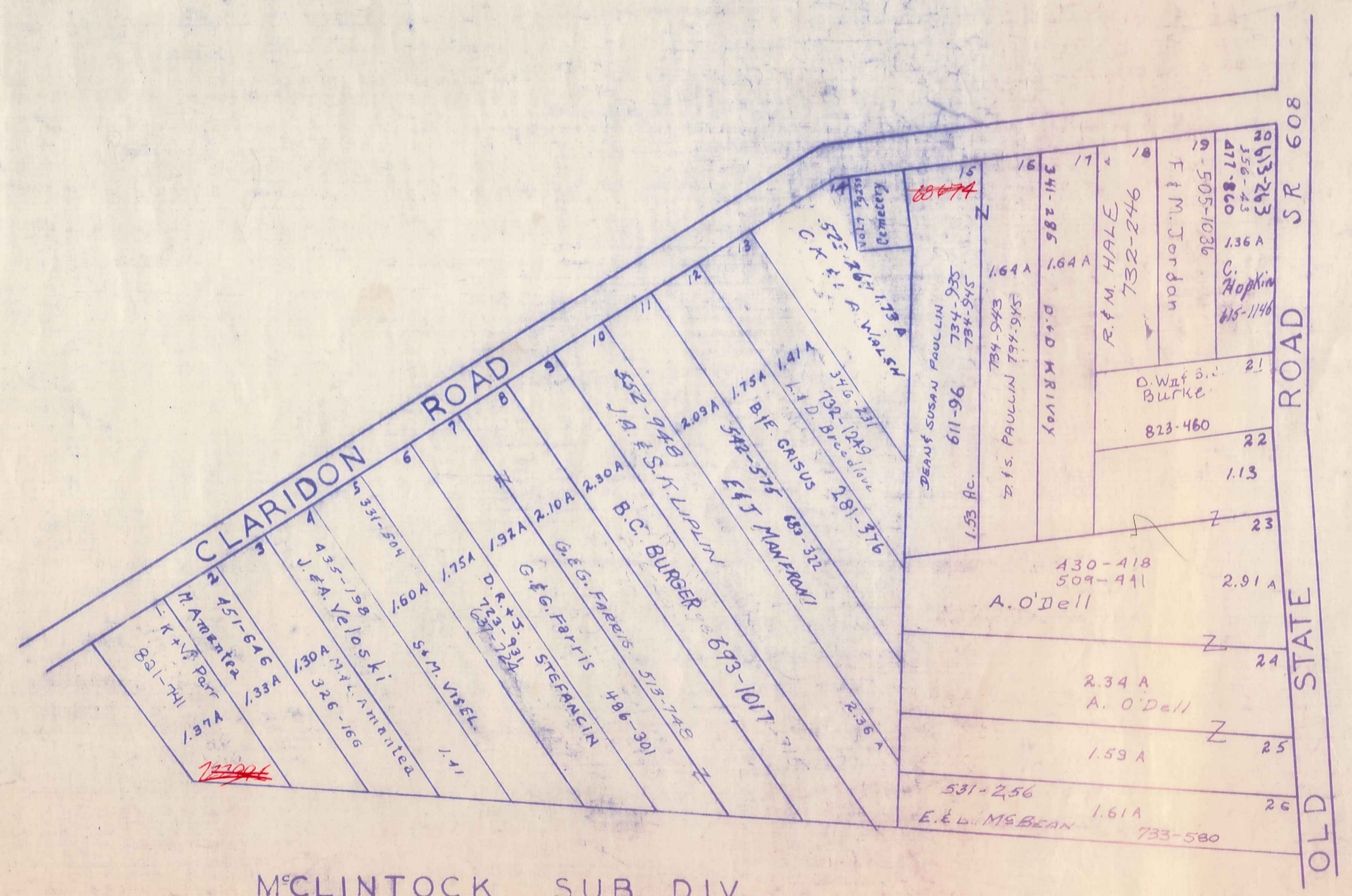
\* Inadequate description



C L A R I D O N T O W N S H I P



MONTVILLE TOWNSHIP



McCLINTOCK SUB. DIV.  
 VOL. 6 PG. 209  
 LOT 6 & 11 BOND TR.  
 Scale 1"=200'



SCALE 1" = 300'  
 JAN. 1, 1989

A	B	C	D
E	F	G	H
I	J	K	L
M	N	O	P

HAMB DEN TWP.

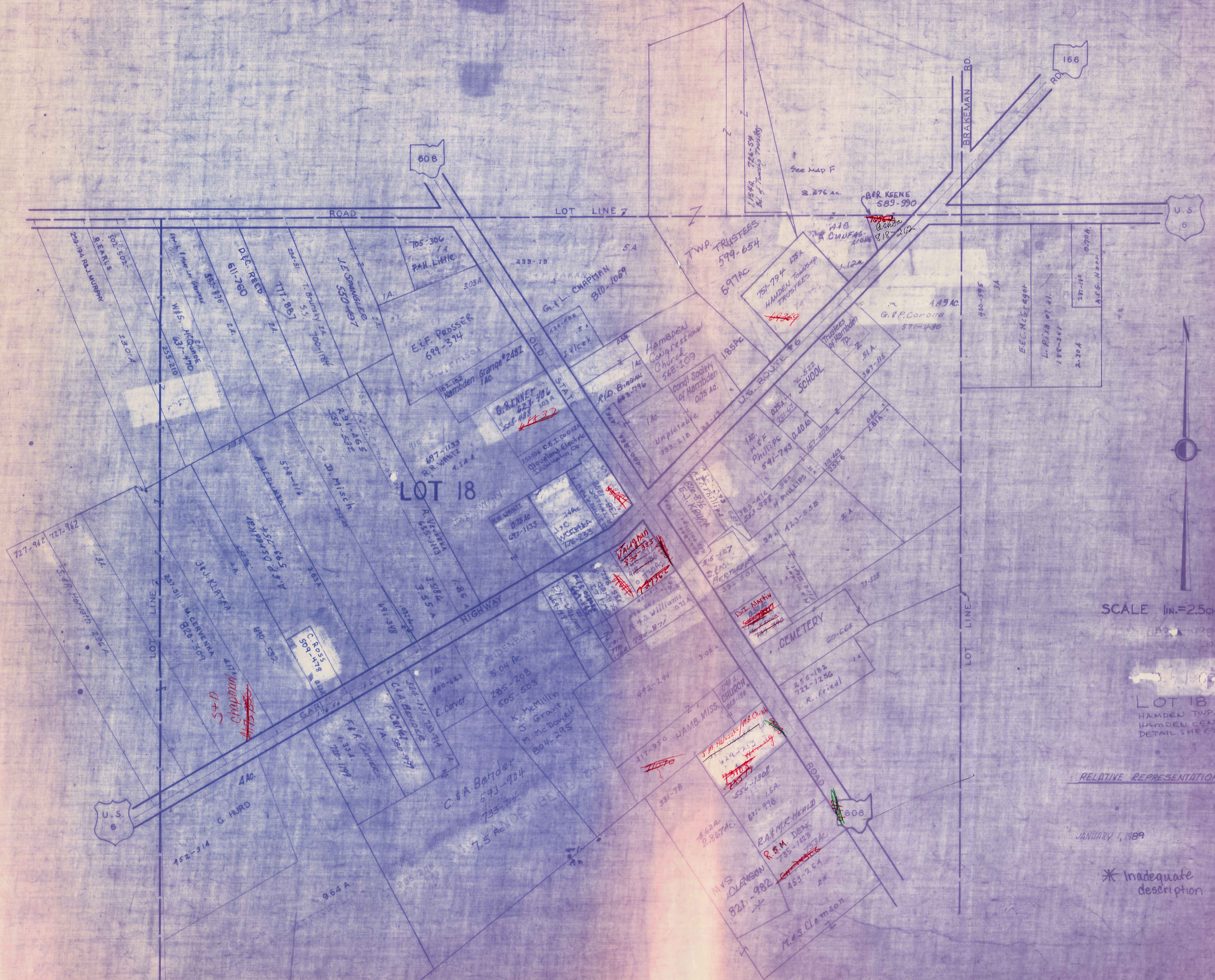
RELATIVE REPRESENTATION

\* Inadequate description

HAMB DEN CENTER AND VICINITY

HAMB DEN TWP.

HAMB DEN CENTER AND VICINITY



SCALE 1 in. = 25 ch. or 165 ft.

LOT 18  
HAMB DEN TWP.  
HAMB DEN CENTER  
DETAIL SHEET 9 C 12

RELATIVE REPRESENTATION

JANUARY 1, 1989

\* Inadequate description